

Welcome to St Andrew's C.E. Primary School, Leasingham



Your child's class is York



The Early Years Foundation Stage

Prime Areas of Learning

- Personal, Social and Emotional Development
- Communication and Language
- Physical Development

Specific Areas of Learning

- Literacy
- Mathematics
- Understanding of the World
- Expressive Arts and Design

Adult-Led Learning



Child-Initiated Learning



Tapestry

- At St Andrew's, we have invested in a piece of educational software called 'Tapestry'. By logging on with a secure username and password you will be able to view your child's observations, photographs and videos reflecting their learning in Foundation.
- You will receive an email telling you when a new observation or piece of work is available for you to view. This will enable you to follow your child's individual progress closely and you can reflect upon their achievements at home. You will be able to add your own comments and observations so that we are able to find out about which activities your child really enjoyed and the learning they have been up to at home.
- Staff will reference your child's learning to the EYFS profile so you will know which area of learning your child is achieving in and the age-band they were working in for that activity. All of this information is held on a highly secure server which is monitored.

Tapestry is a great way of finding out day to day life in our classroom.



Uniform & Book Bag



PE Kit



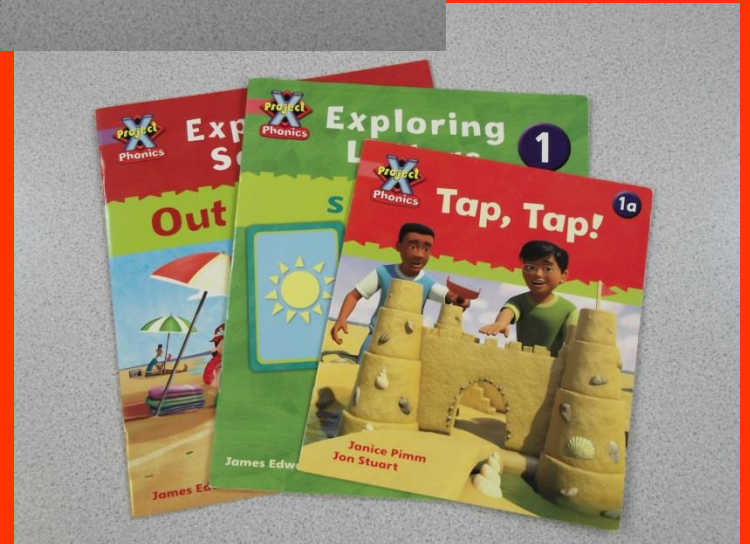
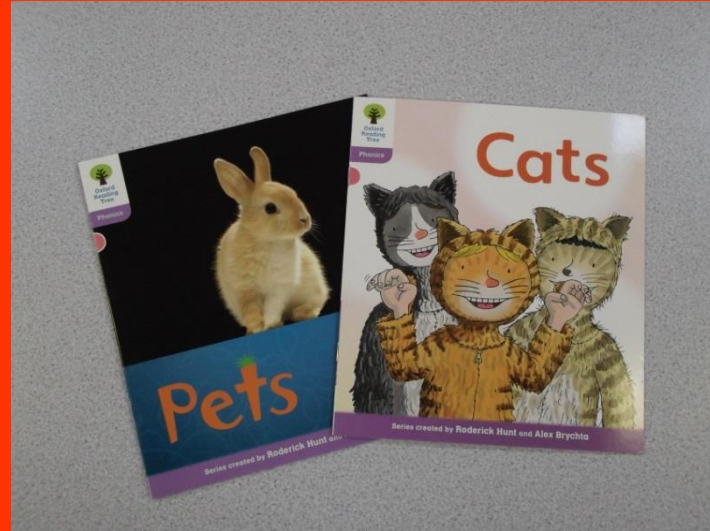
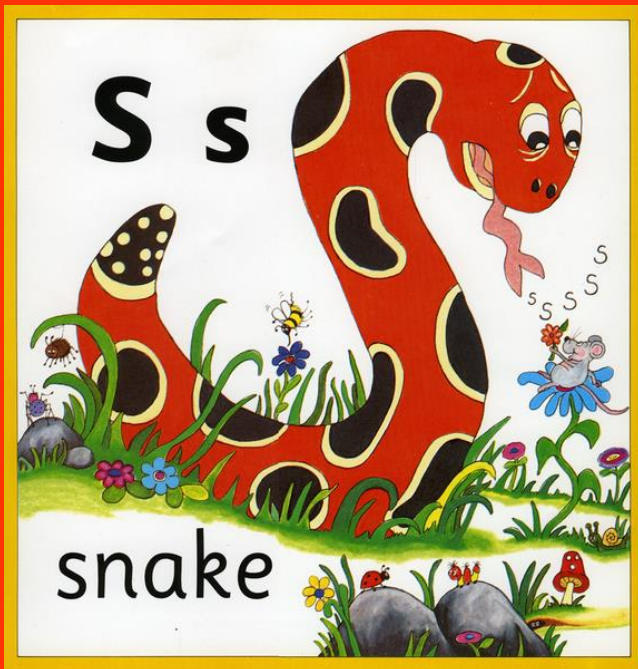
Snack and Milk



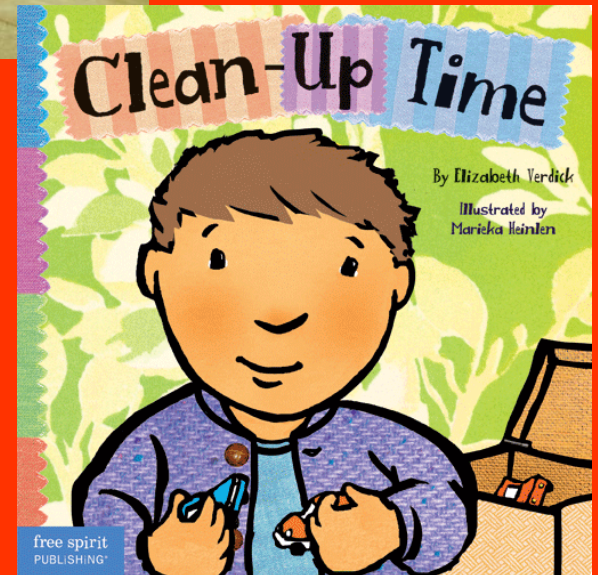
Lunch



Phonics & Reading Scheme



How can I help my child prepare for school?



Sickness and Medication

Sickness – if a child vomits at home or school, our policy states that they should remain at home for the first 48 hours. This is not only for the child's sake but to protect the rest of the children and staff in class.

Please let us know of any medical conditions or requirements your child has, even if they may appear insignificant.

Medication – when a child is prescribed medicine they are to stay away for the first 24 hours in case of any reactions. The parent/carer is required to sign a form at the office, giving permission for an adult in school to administer the medicine on the child's return to school.

And finally

We are very much looking forward to a
positive start for your child, here at
Leasingham,
St Andrew's in September.

Mrs Moseley