

—— 12th September 2025 ——

St Andrew's News

'Everything you do, do in love'



Headteacher's Message

Welcome back to this new academic year! It has been lovely to welcome your children back to school and we have been delighted with how they have settled into new and familiar school routines. A special mention also to our new Reception children in York class, who have started school for the very first time this week. They have settled in very well and have already become used to their new surroundings.

We were very pleased to welcome so many parents to our Open Classrooms evening on Wednesday. We hope you enjoyed the opportunity to view your child's learning environment. The PowerPoint presentations running on a loop in each classroom will be uploaded to the class pages on the website in the coming days.

A letter was sent out earlier this week with key dates for the upcoming term. Any changes to these dates will be communicated to you as soon as possible. You can access this letter on our website via this [link](#).

Wishing you an enjoyable weekend ahead.

Mr M Baker
Headteacher



School Vision

At St. Andrew's, we seek to be a safe and happy environment, inspiring our school family to be positive participants in the world community. A place where we are all encouraged, through love and service, to be the very best.

'Love one another, as I have loved you'

John 13:34

School Improvements

A significant amount of work has taken place on site over the summer, to improve the school building environment. New carpets have been laid across the whole school, as well as replacement flooring in the hall. I know the children were very impressed when they returned last week, as we could tell from their amazed faces in Collective Worship. Please see below for photographs of our new-look school!



This Term's Value

This term, we will be focusing on the Christian Value of compassion. We will explore this value through Collective Worship, prayer writing, as well as conversations in class and around the school. It will also come into discussions relating to upcoming events, such as Harvest and the Macmillan Children's Cake Morning. Please do re-enforce this value at home. We would love to hear how the children have demonstrated this outside of school, perhaps at some of the clubs they attend or as part of daily life at home.



Macmillan Cake Morning



We will be holding a Macmillan Cake Morning for the children on Friday 26th September, to support this very worthwhile cause. Each class will have the opportunity to come into the hall and enjoy a sweet treat and some juice. If you are able to, we would be grateful of a small donation on our Just Giving page (please see link below) We would also be very grateful of any donations of packs of individual cakes for this event for the children. If you are able to donate any items, please could you bring them to school on the mornings of either Wednesday 24th, Thursday 25th or Friday 26th September, and leave on the trolleys by the main entrance. We look forward to supporting this event in two weeks time.

[Macmillan Just Giving Link](#)

Key Stage 2 Harvest Church Service

Our Harvest Service will be taking place for children in Key Stage 2 (Years 3, 4, 5 and 6) on Thursday 2nd October. This will begin at 9:30am in St. Andrew's Church, with Year 3 taking the lead. Parents, friends and relatives are very welcome to attend this service. Ahead of this, we would like to ask for donations of items currently required by Sleaford New Life Community Larder. Please [click here](#) for further details.

We would be very grateful of any donations that you can make, which will be delivered to the Community Larder. Please could any donations be brought into school between Monday 29th September and Thursday 3rd October. Thank you in advance for your support of this cause.



Medication

Please can we ask all parents to update us on any changes to medication/medical requirements for your children. Please could you let us know of any changes by Wednesday 17th September, either in person at the school office or via email.



ST ANDREW'S C OF E PRIMARY SCHOOL

'Everything you do, do in love'

Is your child due to start school in September 2026? We would be delighted to show you around our wonderful village school, offering:

- High academic standards, consistently above national averages
- A strong christian ethos, recognised in our 2025 SIAMS inspection
- A well resourced environment, including a brand new extension housing Wrap Around Care provision
- An experienced staff team providing caring support for all children

Tour dates and times

- ✓ Monday 20th October - 11:00am
- ✓ Wednesday 5th November - 1:30pm
- ✓ Thursday 6th November - 11:00am
- ✓ Wednesday 12th November - 4:00pm and 5:00pm
- ✓ Thursday 13th November - 1:30pm

Please contact us to book a visit:

Tel: 01529 302388

Email: enquiries@st-andrews.lincs.sch.uk



Lincoln Road
Leasingham
Sleaford
Lincs
NG34 8JS

Useful Links for Parents

Healthy Minds Lincolnshire

Providing support and treatment for children, young people and their families, who are experiencing emotional wellbeing difficulties.

<https://www.lpft.nhs.uk/young-people/lincolnshire/young-people/i-need-more-help/healthy-minds-lincolnshire>

Place2Be

Place2Be is a children's mental health charity working with pupils, families and staff in UK schools.

<https://www.place2be.org.uk/>

Mind

Providing support for people experiencing, or supporting someone with, a mental health problem.

<https://www.mind.org.uk/> Tel: 0300 123 3393

Family Lives

Providing early intervention and crisis support to families.

<https://www.familylives.org.uk/> Tel: 0808 800 2222

Lincolnshire Parent Carer Forum

LPCF is specifically tasked with working alongside the Local Authority and Health to help ensure that the services they plan, commission, deliver and monitor meet the needs of children with Disabilities and Special Educational Needs. You will need to register with them for free before being able to access the resources and support.

<https://www.lincspcf.org.uk/>

Luminova - digital therapy enabling children to build confidence and manage their worries - luminova.app/lincolnshire

Please also see the Pastoral section on our website for more helpful links.



Your guide to health services in Lincolnshire



Self Care

Treat aches, pains, coughs, and colds at home. Stock up your medicine cabinet with over the counter remedies.



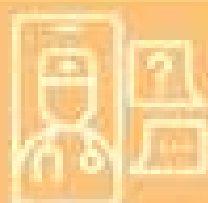
Pharmacy

Visit your local pharmacy for advice on minor injuries, allergies, constipation, headaches, cold and flu symptoms, and earache.



Your GP Practice

Contact your GP practice about symptoms that aren't going away. They can offer you an appointment or signpost you to other services.



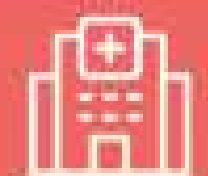
NHS 111

If you have an urgent health need but are not sure what to do, think NHS 111. Call 111 or visit 111.nhs.uk. Available 24/7.



WaitLess

Download the WaitLess app to view live waiting times, queue numbers and travel-time information for our urgent care facilities.



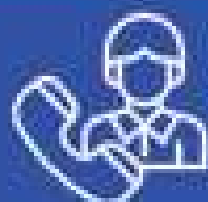
Urgent Treatment Centre

Seek help for sprains, fractures, minor burns, and skin infections. Simply walk in or book an appointment via NHS 111.



Dental Treatment

For urgent dental care please contact your normal dental practice, or for advice out of hours call NHS 111.



Mental Health Crisis

If you are worried about your mental health, call 111 and choose Option 2. Available 24/7.

LEASINGHAM ST ANDREW'S PTFA NEED YOUR HELP

COME AND JOIN US!

VOLUNTEER AT ONE OF OUR
EVENTS

OR HELP ON A REGULAR BASIS
PLANNING AND ORGANISING OUR
EVENTS AND ACTIVITIES

If you would like to
get involved please
email the school.

[enquiries@st-
andrews.lincs.sch.uk](mailto:enquiries@st-andrews.lincs.sch.uk)



PLEASE JOIN US FOR ST ANDREWS LEASINGHAM



MEETING

of the 2025-2026 school year!

**THURSDAY, SEPTEMBER 25TH
4:30 AT THE SCHOOL**



EVERYONE IS WELCOME!



Come along and see what the Ptfa is all about, you don't have to help at every event or attend every meeting. We just ask for your support to help when you can.

**PARENTS, GRAND PARENTS, FAMILY MEMBERS AND FRIENDS
CAN JOIN THE PTFA**

PLEASE CONTACT THE SCHOOL OFFICE WITH YOUR DETAILS IF YOU WOULD LIKE MORE INFORMATION

We hope to see you there!

Turn your daily shopping into everyday magic for us with easyfundraising

You shop, brands donate to us. It won't cost you any extra!



 easyfundraising

Help us make a difference when you shop.
Visit www.easyfundraising.org.uk



- 1 Visit www.easyfundraising.org.uk
- 2 Sign up and search for us
- 3 Your favourite brands donate to us whenever you shop with them

Shop with 7,500+ brands including:

Booking.com

ebay

M&S

GROUPON



TUI

JOHN
LEWIS



Viking

ASOS



Uber Eats

Important Dates

- **Monday 15th September** - Individual Photos
- **Tuesday 16th September** - House Captain Elections
- **Monday 22nd September** - Clubs begin this week
- **Tuesday 23rd September** - Road Safety in-school sessions for Years 1, 3, 4 and 5
- **Thursday 25th September** - Road Safety Walks for Years 2 and 4
- **Thursday 25th September** - PTFA Meeting (see flyer in this issue of the newsletter)
- **Friday 26th September** - Children's Macmillan Cake Morning



Nut Free School

A reminder to please ensure that your children do not come into school with any food containing nuts. This is due to some children having nut allergies. If you are unsure of whether food you are intending to provide contains nuts, please check with staff in the school office. Information regarding nut allergies from the NHS can be found via the following link:

<https://www.nhs.uk/conditions/food-allergy/>



St.Andrew's Church of England Primary School
Lincoln Road, Leasingham, Sleaford, Lincolnshire, NG34 8LS
Headteacher: Mr M W Baker

Telephone: 01529 302388
Email: enquiries@st-andrews.lincs.sch.uk
Website: www.st-andrews.lincs.sch.uk
X: @LeasStAndrews

