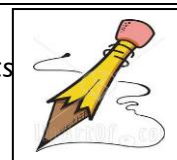


## CURRICULUM OUTLINE

### Canterbury: Year 3 Summer Term 2025 'Its all Greek to me!'

This term, the class will be engaged in this fun topic all about Ancient Greece. They will go back to one of the most fascinating civilisations in history.

**English:** Starting the term off, we will be using 'The Boy Who Grew Dragons' by Andy Shepherd as our stimulus to write our own narrative. We will enjoy reading lots of Myths and Legends, with a focus on Theseus and the Minotaur, we will then write our own version of a Greek myth. At the end of the term, we will be writing an explanation text. Within all genres, grammar and punctuation will be taught plus we will be undertaking handwriting practise and spelling activities. Guided Reading will also take place during the week.



**Maths :** To begin we will continue our fractions unit where we will order and compare fractions then work to add, subtract and convert fractions as well as problem solving. We will be looking at the value of money, we will investigate how to use different coins to find the same amount of money as well as adding and subtracting different amounts. Finally, we will explore pictograms and bar charts; perimeter and angles.

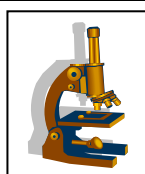


Key Instant Recall Facts (KIRFS) – we will continue to develop our quick recall of our times tables with a focus on the 4s and 8s. Our final focus will be doubling and halving numbers to 100.

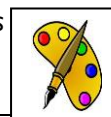
**History:** Our enquiry question this term is – 'The Ancient Greeks had no impact on the western world. Agree or disagree?' We will begin by finding out when the Ancient Greeks existed, then thinking about whether all Greeks were the same or different within their city-states. Next, we will look at how important Alexander the Great's empire was and what daily life was like in Ancient Greece. Ending our unit, we will investigate significant achievements and the impact they had on the western world.



**Science:** In Science, we'll be exploring our "Animals Including Humans" unit. We will consider the types of nutrition for both humans and animals, and we'll investigate how the human body is supported by a skeleton and muscles, comparing these to various animals. Following this we will be learning about forces and magnetism. We will begin considering what a force is and how objects move on different surfaces. Next we will investigate magnetism, where we will explore how which materials are magnetic and whether magnets attract each other.



**Art / Design Technology:** In art we will explore papier-mâché and clay techniques to create our own Greek style theatre masks. During the second half term, we will be looking at food technology, where we will make Greek salads and dips.



**Computing:** There will be a variety of aspects of computing covered this term, beginning with learning about how to create graphs on a computing programme. We will develop these skills further by learning how to create branching databases as well as spreadsheets. We will also look to create some of our own simulations as well as thinking of aspects of Esafety.



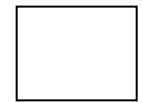
**Physical Education (P.E):** The focus for the summer term will be on athletics, along with striking and fielding games. During the term, the children will learn the skills for both track and field disciplines while the striking and fielding games will focus on cricket, rounders and golf skills. Our P.E days will be **Thursday and Friday**; on both days and throughout the summer, the sessions will be outdoor. Please ensure your child has the correct school PE kit and footwear for these activities.

**Music:** This term our musical focus will be Mangrove Twilight, a percussion unit with a focus on calypso focusing rhythms from the Caribbean and South America. Over the unit we will learn a range of tuned percussion techniques, clap and play a clave rhythm culminating in an ensemble performance.



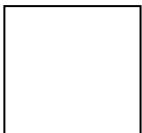
**Religious Education (RE):** Our first focus question is – Why is the story of Buddha important to some Buddhists? We will consider the significance of the Buddha to many Buddhists and how many Buddhists might try not to be selfish or greedy because of his example. Our final unit is ‘Why do Sanatani’s use symbols? Here we will start with the Sanatani creation story and focussing on the Aum (Om) and the lotus. Looking at how these symbols are used today.

**Personal Social & Health Education (PSHE):** The two topics covered this term are: Relationships and Changing Me. Initially, we will be looking at relationships where we look at the roles and responsibilities we have within our families and friendships as well as how to keep safe online. Our final unit will be changing me where we will think about how babies grow and changes that occur inside and outside of our body.



**French:** The unit this term will be ‘Les Fruits’ where we will introduce the children to ten fruits and their associated article. We will look at both singular and plural form as well as giving our opinions of our likes and dislikes.

**Homework:** Homework will be provided to support the Maths lessons in class to ensure consolidation of knowledge plus regular reading is essential. All homework will be set on Teams on Thursday to be completed by the following Tuesday.



**Mrs A Bell**

**April 2025**