

Curriculum Outline

'WATER WORLDS'

Southwell

Year 6

Summer Term

Literacy

This term we shall begin by carrying on our Skellig book study completing a variety of different genres including: a balanced argument and poetry. Our writing for the rest of the term will be linked to our topic 'Water Worlds' where we will be demonstrating our ability to write a variety of genres, including all Y6 expectations. We will be looking at the language features, punctuation and text structure and organisation of narrative texts, explanations, non-chronological reports and poetry.

Numeracy

- Number and Place Value
- Addition, subtraction, multiplication and division
- Fractions, decimals and percentages
- Measures
- Geometry
- Patterns and number
- Statistics

Science

In the first half of this term, we will be linking our science to our topic 'Water Worlds' focusing specifically on various areas linked to water. We will investigate water in its three states: solid, liquid and gas. It will be here we will learn the different stages of the water cycle. As we link our learning of water in Science to rivers in Geography, we will investigate different plants and animals found near rivers and explore how they have adapted to live in different habitats. During the second half of the term, we will be exploring the human circulatory system. The learning will cover the role of the heart and lungs; the blood and healthy lifestyles.

Information Communication Technology

The first half of the summer term we will be learning about spread sheets using Microsoft Excel. The children will have an opportunity to input data and become familiar with using formula to help with calculations. After half term, we will further develop our coding skills by beginning to use HTML to create and debug algorithms. In addition, we will also continue to develop our knowledge of how to stay safe and show respect online.



French

This term in French, we will be learning about the water cycle in French using the book, "Gaston le Goutte." The book follows Gaston's journey from the sea into the clouds and mountains. The children will be using their existing science knowledge to help them learn about the French vocabulary linked to the water cycle. They will be retelling the story in their own words – in French!



Physical Education

This term our PE will mainly be outdoor, including athletics and games. In athletics we will be developing and practising our running, jumping and throwing techniques. Many different challenges will be set for distance and time that involve using different styles and combination of running, jumping and throwing. Additionally, we will be part of the Carre's Grammar School sports outreach programme in the second half of the term.



PE days this term: Monday and Thursday (both outdoor)

Please ensure that P.E kits are in school every day.

Geographical and Historical Understanding

As the title of our topic 'Water Worlds' suggests, the main focus of our unit is rivers. We will begin by identifying the main rivers of the UK, identifying the source of these rivers; the mouth and the major towns and cities that they travel through. Following this we will spend time investigating our local rivers: The Slea and The Witham. We will be describing the course of the river as well as explaining why cities and towns are located on or close to rivers and why people are attracted to live near them. Using maps and the internet, we will use our research skills to find out about many of the World's most famous rivers, producing an information text drawing upon all our knowledge gained through the unit. Finally, we will look at the process of erosion; what an estuary is and how flooding can be prevented.



Religious Education



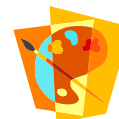
Our theme for this term is Sikhism and understanding Sikh beliefs and lifestyles. We will be learning about the different signs and symbols from this major religion of the world. We will be listening to a variety of Sikh stories and learning about the different festivals and the lifestyles.


Personal Social Health Education (PSHE)/SEAL

During the first half of the term we are going to be looking at the theme relationships. We will be exploring feelings within the context of our important relationships including family and friends. Through this topic we will be developing self-awareness as well as looking at managing feelings and empathy. In the final weeks of the year, we will move on to look at the theme of changes. The children will develop an understanding of different types of change, positive and negative, and common human responses to it. They will also develop their ability understand and manage the feelings associated with change.

Creative Development

Linked to our topic 'Water Worlds' this term, we will be researching the works of the famous impressionist Claude Monet. We will be investigating and appraising many of his paintings including: Winter on the Seine and Water Lilies. As well as learning about his work and style, we



 will be creating our own individual piece of art inspired by Claude Monet's works. In the second part of the term, we will be planning, designing and making our own products, ready for selling at our school summer fair. It is here we will become entrepreneurs pitching our ideas to a Dragon's Den panel; proving our ability to make a profit. In Music this term we will be continuing to develop our playing of tuned instruments using ocarinas and we will investigate music linked to our topic by using soundscaping. We will also use vocal percussion and instruments to create our own compositions, and finally, in preparation for our end of year production we will be developing our singing skills.

Homework

Again, homework this term will be handed out on a Thursday to be handed in on the following Tuesday. At the start of the term, homework will be linked to revision in preparation for KS2 SATs. After SATs week the homework will be more topic based although some Maths and English work will still be sent home. The class are reminded that on Friday lunchtimes, homework club is available for those who require access to IT equipment or would welcome a head start before the weekend.